



KATHOLIEKE UNIVERSITEIT
LEUVEN

Public presentation of the EQIBELT project results

Project overview
on behalf of EU consortium members

Wim Van Petegem
K.U.Leuven - AVNet
January 22, 2009





K.U. Leuven



- Founded in 1425
- Teaching and research university:
 - > 30.000 students
(± 12% international students)
 - > 15.000 staff members
(4500 researchers: 1250 sr + 3250 jr)
- 3 groups, 14 faculties, >50 departments
- 30 libraries
- 5 hospitals





What have we done?

- Project meetings
- Workshops
- Conferences
- Study visits
- Consultancy
- Advice
- Trainings
- Bench marking
- ...





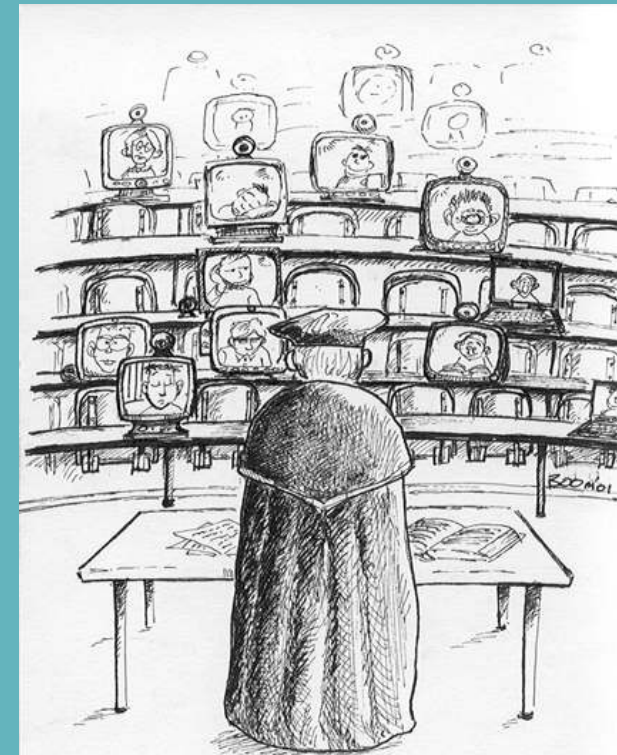
What did we achieve?

- eLearning awareness and understanding
- eLearning visibility
- eLearning strategy
- eLearning support centers
- eLearning platform
- eLearning best practices
- eLearning newsletter and promotion
- eLearning common language
- ...



What have we learnt?

- From learning to eLearning,
 - Back to learning again
 - Or to MyLearning
 - Or to eLearning 2.0
- eLearning is going international
 - Across borders
 - Respecting intercultural diversity
 - Including virtual mobility as add-on to physical mobility





What have we learnt?

- eLearning is 'open'
 - Anywhere, anytime, anyhow
 - Everywhat for everyone
- eLearning fosters (new) professional and private friendships
- ...





What are we looking for?

- Including/linking more (all) Croatian universities
- Further networking (EuroPACE, EDEN,...)
- Continuing collaboration
- New common projects (TEMPUS or others)
- Advanced trainings
- ...



Contact

More information?

- Link: <http://www.avnet.kuleuven.be/en/>
- Mail: info@avnet.kuleuven.be
- Call: +32-16-32.82.00
- Fax: +32-16-32.82.70
- Visit: Kapeldreef 62, 3001 Heverlee