



KATHOLIEKE UNIVERSITEIT
LEUVEN

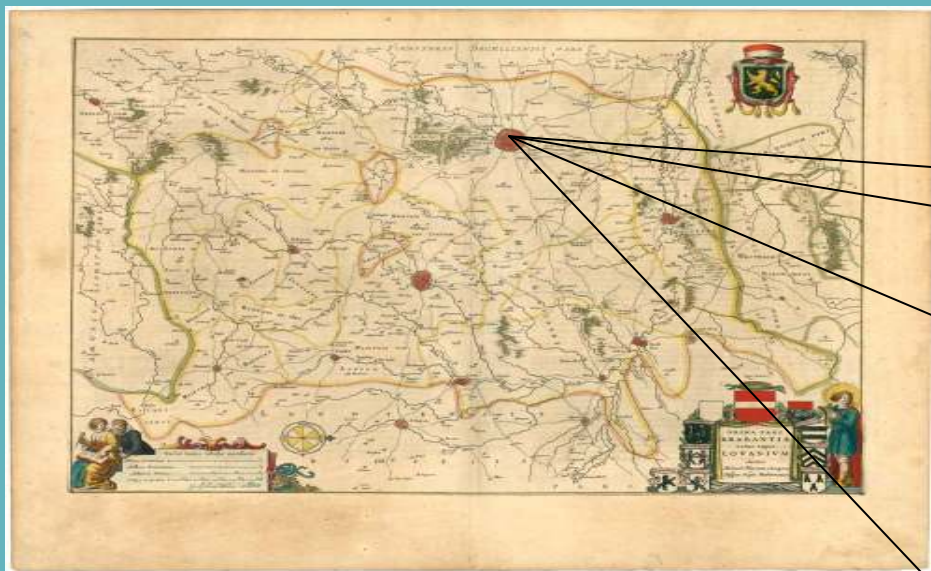
Toledo

The digital learning environment at K.U.Leuven
A university wide approach to
strategic and operational issues





A little bit of context



Founded in 1425 in the heart of Europe



Teaching & Research



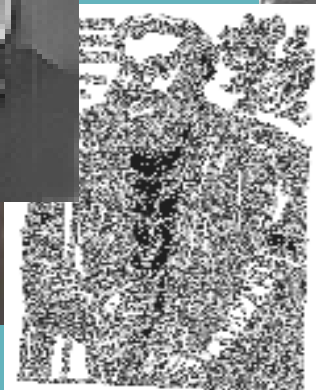
The Hallen in Louvain



EQIBELT Workshop Dubrovnik 04/03/06



Teaching & Research



JUSTUS LIPSIUS.
Philologus incomparatus Lovan.



And teaching ?



EQIBELT Workshop Dubrovnik 04/03/06



The metaphore: Fonske



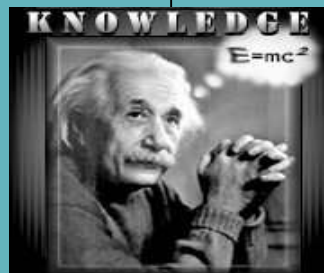
EQIBELT Workshop Dubrovnik 04/03/06



Times do change rapidly



KATHOLIEKE UNIVERSITEIT
LEUVEN



A photograph of a large, historic university building with a prominent tower and a clock tower, set against a blue sky with light clouds.

Goals of university teaching

- **Critical scientific attitude: students should**
 - assimilate discipline specific research findings and frameworks
 - acquire insight in the coming about of these findings
 - be able to acquire information independently
 - be able to contribute themselves to the development of knowledge
 - be able to use the knowledge acquired in solving new problems and in developing independent and articulated viewpoints
- **Graduates should be able to take responsibility in society:**
 - able to develop an articulated viewpoint in societal matters



Students' responsibility: the learning process

- Starting point:
 - learning is an active, constructive, cumulative, goal-oriented, self-regulated, contextualised, social process
- Students should
 - acquire an in-depth understanding of the instructional goals
 - select and engage in appropriate learning activities
 - call for additional help if the learning environment provides insufficient support



Teachers' responsibility: support of students' learning process

- to define adequate goals in agreement with programme responsables
- to consistently construct an assessment approach for these goals
- to elaborate an environment that in line with GIL-principles, encourages self-regulation by providing sufficient and goal-directed support



The need for an overall educational concept

- Need for a shared view on the meaning of excellence in higher education
- External dynamics: quality assurance
- Internal dynamics:
 - faculty development and training
 - appointments of teachers and teaching staff



The need for Guided Independent Learning (GIL) as an overall concept

- Evaluation of alternatives:
 - Selfinstruction, PBL, Competence oriented education ...
 - A deliberate choice for:
 - explicitation of aims and objectives
 - importance of communication in a research praxis
 - decision making on a faculty level
 - room for characterization of programmes
 - confirmation of the autonomy and the critical role of the university
- GIL as an answer to the need for external and internal justification



GIL: Characteristics

- Guided Independent Learning is a comprehensive concept:
 - Defines goals for university teaching, roles and responsibilities of students and faculty members
 - It is referred to in all decisions with educational consequences

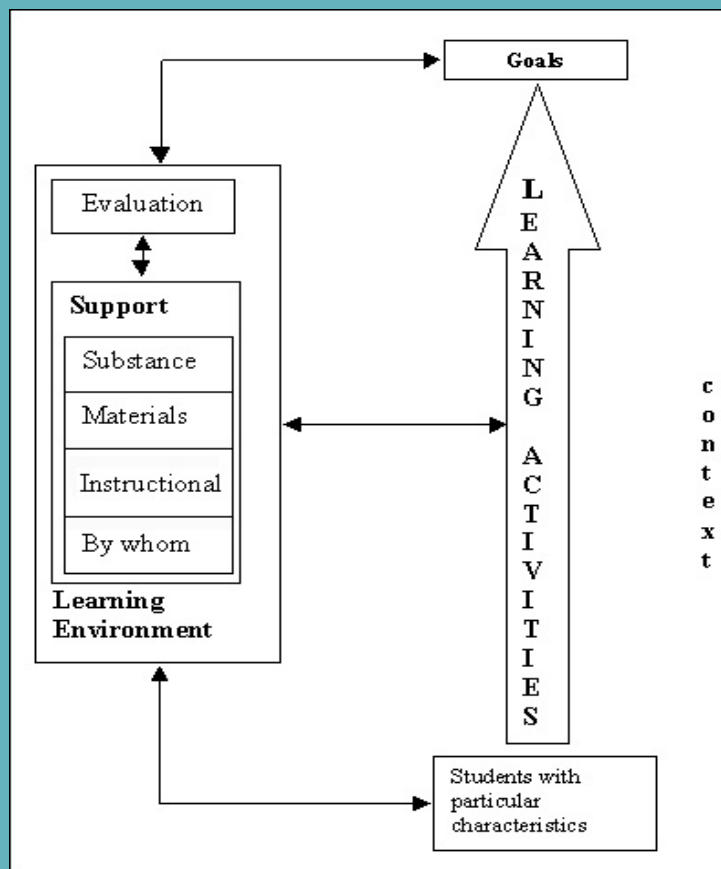


GIL: Characteristics (cont.)

- GIL does not reject particular instructional approaches – still there are guidelines:
 - Education has to be functional
 - Participation in research activities is highly valuable
- GIL entails an affirmation of the semi-autonomous position of the university



GIL: global scheme



EQIBELT Workshop Dubrovnik 04/03/06



Toledo: e-learning at the K.U.Leuven



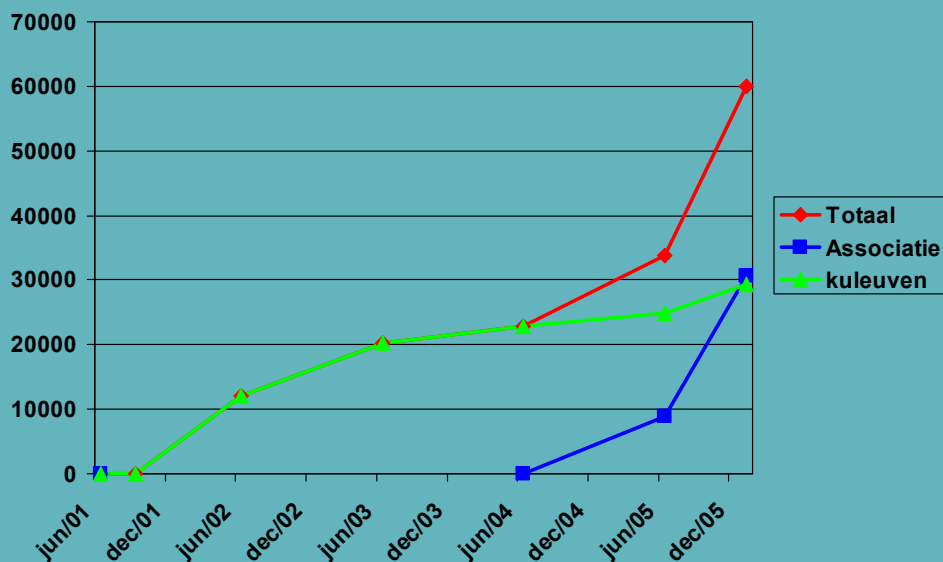
- Logo
 - Alcatara-bridge in Toledo
 - Bridge between students and faculty
- Acronym
 - Toetsen en Leren Doeltreffend Ondersteunen
 - Effectively supporting Testing and Learning
- Aim is to implement and support (technically and pedagogically) a digital learning environment for all students and faculty at the K.U.Leuven



Toledo: e-learning at the K.U.Leuven



Active students Toledo



- Start 2001
- 7 FTE (4 LUDIT / 3 DUO)
- Impact
 - On the course
 - On the organization of the faculty
 - On the support of education



Toledo

- Global ideas
- Global infrastructure
- Developments
- Support organisation



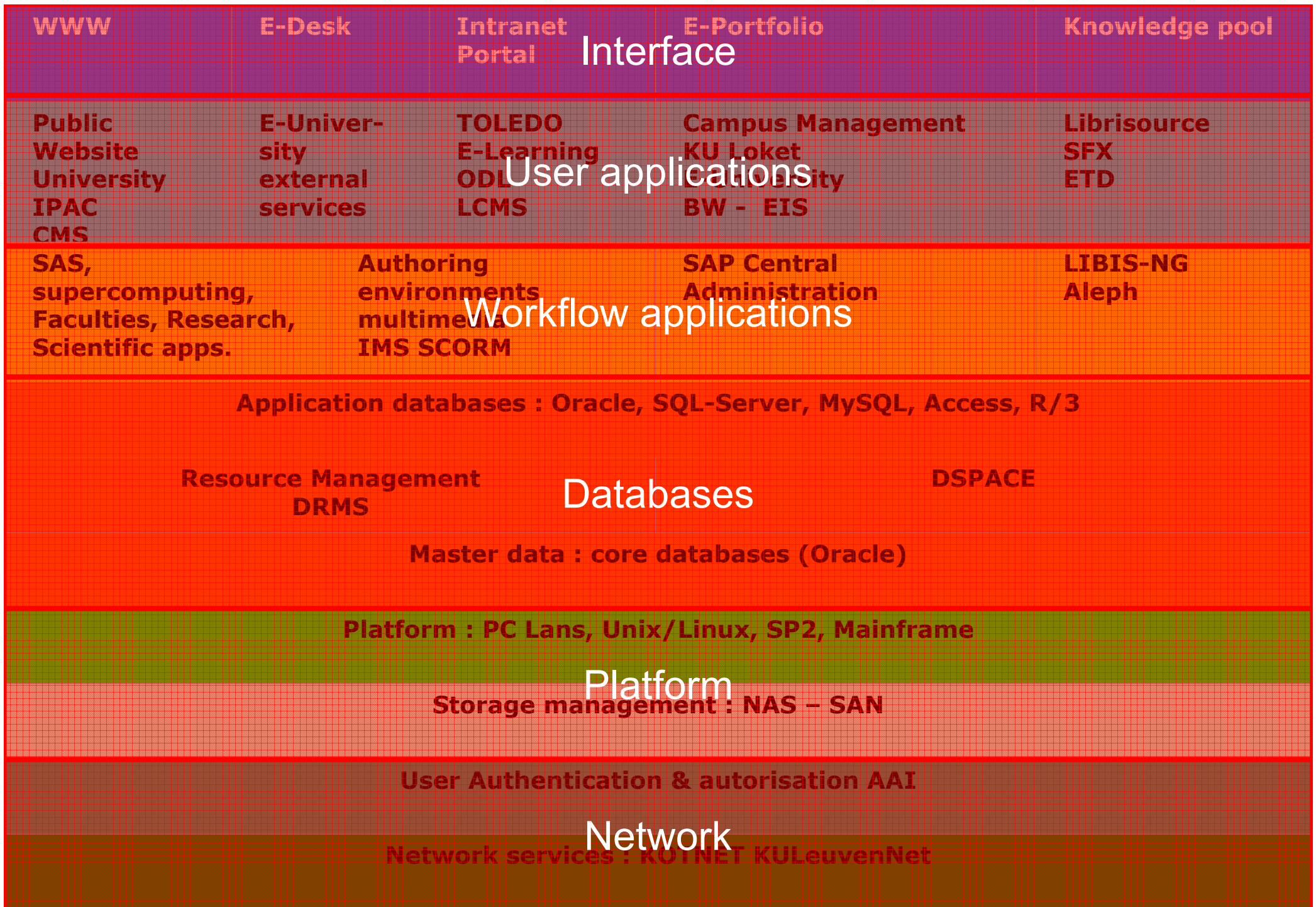
Global ideas

- Toledo is a part of the Global ICT infrastructure
- Toledo must evolve to an educational portal for the K.U.Leuven and Association
- Toledo must be flexible
- Toledo must be extendable
- Toledo must be open and secure



ICT infrastructure

- Open, modular architecture
- Products
 - Oracle
 - SAP ERP
 - Campus management SAP
 - Blackboard & QuestionMark Perception
 - Ariadne Knowledge Pool
 - Shibboleth AAI
- Open standards LOM/SCORM, IMS
- interface Java/Perl, IMS-conforme XML





Role of Toledo?

- Educational portal
- Tools for end users
 - Documents, fora, assignments, tests, ...
- Middle layer
 - Open architecture facilitating upper layer
 - Solves problems of user management, course management and curriculum management via the integration with **Campus Management**
 - Service Level offer
 - Policy on security and privacy

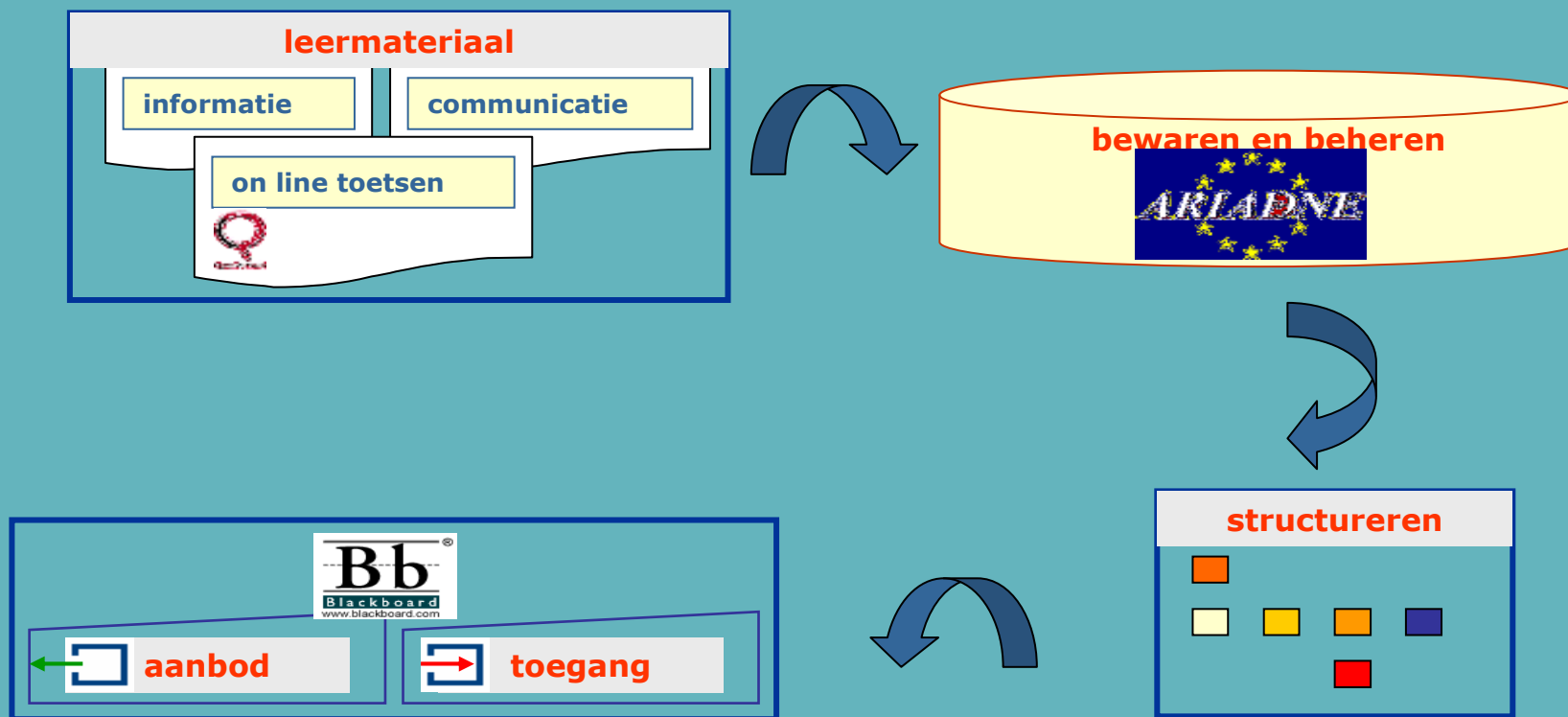


Global infrastructure

- Different components
- Linked in an personalized educational portal

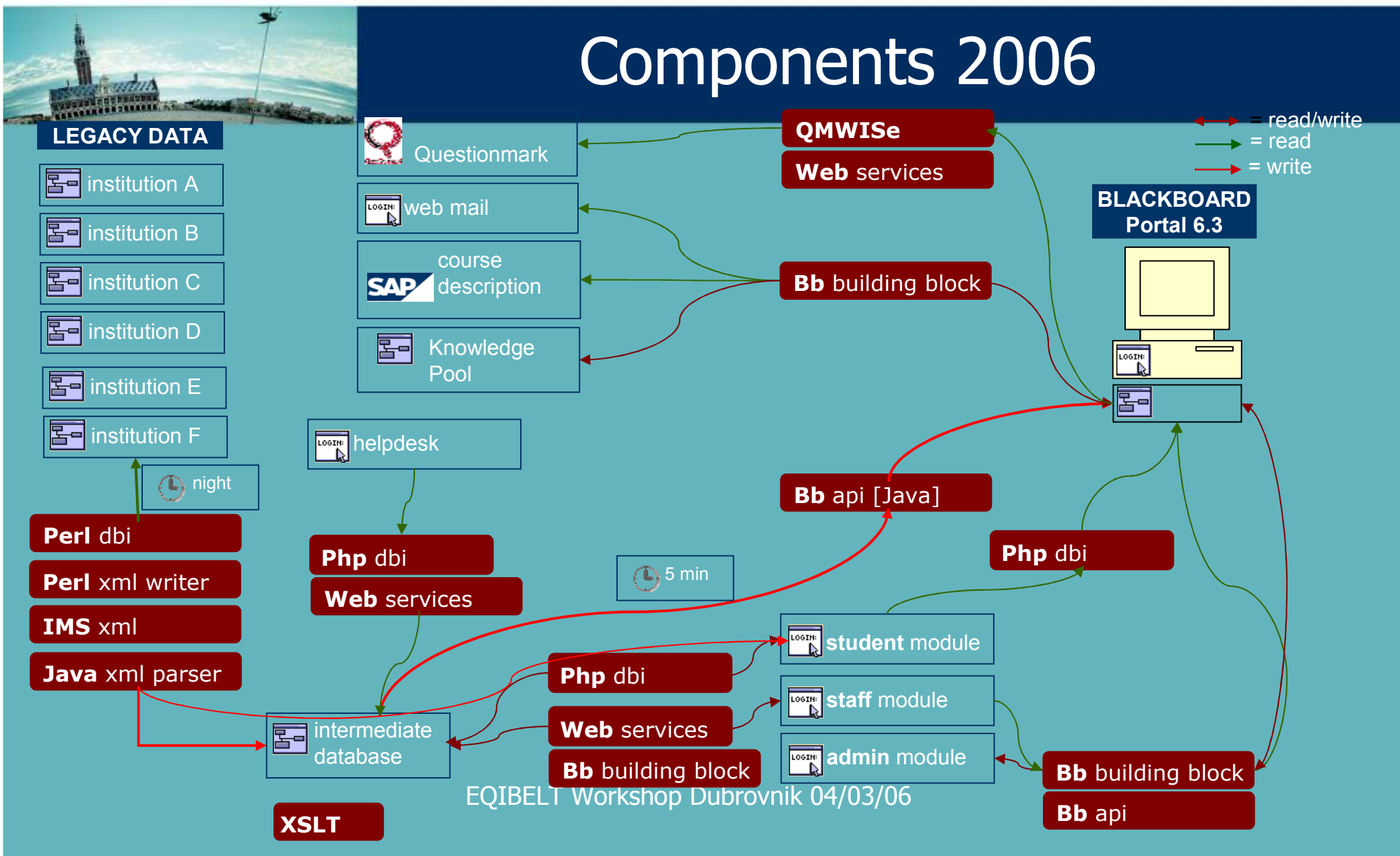


Components at the start





Components 2006





The educational portal....

Blackboard Learning System™ (Release 6) - Microsoft Internet Explorer

File Edit View Favorites Tools Help

Back Forward Stop Home Search Favorites Media

Address <https://cygnus.cc.kuleuven.be/webapps/portal/frameset.jsp>

Toledo Home Help Login

Toledo Help

Toledo

Associatie Login

USERID:

PASSWORD:

INSTITUTION:
K.U.Leuven
K.U.Leuven
Lessius
KHK
KHL im
KaHo Sint-Lieven
W&K
System

Login

Toledo Associatie K.U.Leuven

Lessius HOGESCHOOL
Katholieke Hogeschool Limburg
ASSOCIATIE K.U.LEUVEN
KATHOLIEKE HOGESCHOOL KEMPEN
KATHOLIEKE UNIVERSITEIT

Wegens onderhoudswerken zal Toledo niet beschikbaar zijn van zondag, 3 april 2005 13:00 tot maandag, 4 april 2005 20:00. Onze excuses voor het ongemak.

Due to maintenance activities, Toledo will be unavailable from 13:00 on Sunday, 3 April 2005 till 20:00 on Monday, 4 April 2005. We apologise for the inconvenience.

[Meer Info](#)

Start 6 Microsoft... Microsoft Act... 2 Microsoft... C:\Document... 3 Internet... 2 Microsoft... 15:44

Portal role: Guest

Toledo login module

Depending on url, the institute is set



The Community System

- Information of **all users of the system**
- Information for **all members of an institute**
- Information for all **students/teachers/administrators** of the system
- Information for students/teachers/administrators of **certain institutes**



Portal roles

- Primary role
 - Institute
 - Defines the branding
 - Defines the tab pages
- Secondary role
 - Student / staff / administrator of an institute
 - departments
 - Defines the modules on the tab pages



Portal modules



[Home](#) [Help](#) [Logout](#)

[My Toledo](#) [Admin](#) [System Admin](#) [Help](#)

Help

K.U.Leuven - Help

[Toledo Handleiding voor Docenten](#)
Voor docenten.

[Toledo Tips van de week voor Docenten](#)
Overzicht van de tips die elke week bij 'My Toledo' verschijnen. Voor docenten.

[Studentenhandleiding \(.pdf\)](#)
De studentenhandleiding in Acrobat Readerformaat. versie september 2004

[Studentenhandleiding \(.doc\)](#)
De studentenhandleiding in Microsoft Word formaat versie september 2004

[Student Guide \(.pdf\)](#)
Student guide in Acrobat Reader format version september 2004

[Student Guide \(.doc\)](#)
Student guide in Microsoft Word format version september 2004

[Universiteitsbibliotheek](#)

[FAQ](#)

[Helpdesk](#)

Blackboard Manuals

[Blackboard Learning System - Student Manual](#)
Blackboard Student Manual als pdf

[Blackboard Learning System - Instructor Manual](#)
Blackboard Instructor Manual als pdf

[Blackboard Learning System - release 6 changes](#)
What's new and different for Instructors in the Blackboard Learning System (Release 6)

Content Frame




Help module for all users of
institute K.U.Leuven



Portal modules



 Katholieke Hogeschool Sint-Lieven

  
Home Help Logout

My Toledo

KaHo Sint-Lieven

Admin

Help

Help

KaHo Sint-Lieven - Help

Wanneer u instructor bent van de verkeerde cursussen, of van te weinig cursussen, kan u dit melden bij Kristof Goethals.

Met opmerkingen en suggesties kan u tijdens de opstart van Toledo terecht bij de vertegenwoordig van uw departement in de KVT-EL.

Departement Gent
Wilfried Van Wittenberghe
Departement II
Johan Van den Bossche
Departement Aalst
Peter Denie
Departement Sint-Niklaas
Peter Vandereedt

Deze vertegenwoordigers kunnen terecht bij Bart D'haenens voor specifieke assistentie.

Ook op <http://toledo.kahosl.be/forum/> kan u terecht met opmerkingen, suggesties en vragen.

Blackboard Manuals

[Blackboard Learning System - Student Manual](#)

Blackboard Student Manual als pdf

[Blackboard Learning System - Instructor Manual](#)

Blackboard Instructor Manual als pdf

[Blackboard Learning System - release 6 changes](#)

What's new and different for Instructors in the Blackboard Learning System (Release 6)

Help module for all users of
institute KaHo ST Lieven

Blackboard Learning System™ (Release 6) - Microsoft Internet Explorer

File Edit View Favorites Tools Help

Address: https://deneb.cc.kuleuven.ac.be/webapps/portal/frameset.jsp

KATHOLIEKE UNIVERSITEIT LEUVEN

Home Help Logout

My Toledo Admin Help

Tools: Calendar, Tasks

Welcome, Marijke

Student Tip

TOLEDO TIP: CURSUSSEN ONZICHTBAAR MAKEN

Je kan cursussen die je niet meer wil zien (bijv. van vorig semester) verbergen via het potloodicoon. Announcements niet laten verschijnen in de 'My Courses' kader is eveneens mogelijk.

Klik [hier](#) voor meer informatie.

TOLEDO TIP: MAKING COURSES INVISIBLE

You can hide courses you don't want to see anymore (for example courses of the past semester) using the pencil icon. It is also possible to hide the announcements in the 'My Courses' frame.

Click [here](#) for more information.

My Announcements

ts have been posted today.

[motorische revalidatie bij patiënten met musculoskeletale aandoeningen ter lom, deel 2](#)

Eindwerk 2004

- [Eindverhandeling 2004-2005](#)

Stage ReKi - 2de licentie

- [stageregeling periode 10](#)
- [Seminaries ReKi](#)
- [Logboek](#)
- [Formulier Evaluatie Stageplaats](#)

My Organizations

Organizations in which you are participating:

- [Eindwerk 2004](#)
- [Stage ReKi - 2de licentie](#)

K.U.Leuven - Mail

You have 6 new message(s), 6 unread messages. [[Webmail](#)]

Unavailable Courses

Cursussen waarvoor u bent ingeschreven, maar die niet beschikbaar zijn voor studenten. Courses in which you are enrolled, but which are not available to students.

ID	Title
----	-------

My Courses

Courses in which you are enrolled:

- [L0937a | Ziekteleer en motorische revalidatie bij patiënten met musculoskeletale aandoeningen ter hoogte van de wervelkolom, deel 2](#)

Announcements

- [welkom](#)
- [L0939a | Informatie- en communicatiemedia in de revalidatiewetenschappen](#)
- No Announcements.
- [L0943a | Stages in de motorische revalidatie, deel 2](#)
- No Announcements.
- [L0945a | Gevorderde musculoskeletale revalidatie m.i.v. practicum, Deel 1:](#)
- No Announcements.
- [L0945b | Gevorderde musculoskeletale revalidatie m.i.v. practicum, Deel 1:](#)
- No Announcements.
- [L0946a | Gevorderde musculoskeletale revalidatie m.i.v. practicum, Deel 2: onderste kwadrant](#)
- No Announcements.
- [L0946b | Gevorderde musculoskeletale revalidatie m.i.v. practicum, Deel 2: onderste kwadrant](#)
- No Announcements.

Campus Management

- [Mijn studenten dossier](#)

All students

Students of K.U.Leuven



Developments

- Intelligent links to other applications
- Extra features in the learning portal
 - As portal modules
 - As course modules



Developments



Uitlevering van de LEUWEN logo en de naam van de universiteit. Navigatieknoppen: Home, Help, Log out.

My Toledo Admin Help System Admin

Admin

Administratieve Modules

- Quick Unenroll
- Quick Enroll (Search by user)
- Quick Enroll (Search by course)
- Helpdesk PM
- Webformulier problemen/ragen
- Toledo2know

Inscriptie(modules)

- Inscriptiemodule
- Enrollmentmodule

Taladatum - administratie

- Demo-accounts aanmaken
- Demo-accounts documentatie
- Vormingsinitiatiefpagina
- OTRS

Status 1904's Online

Usage for 24-Jan-2005 16:25:57 PM

Best Time	This Server	View
Last minute	194	View
Last 5 minutes	474	View
Last 10 minutes	1847	View
Last hour	5058	View
Last 4 hours	8653	View

E.M. Laurens - Openbare Modules

- Course Status
- Lijstschrijven
- Communities
- Externe gebruikers
- Toledo

Toledo2know

Waarom zie ik geen verschillende announcements?

Announcements kunnen op 3 plaatsen verschijnen: 1) in de 'My Announcements' module op het tabblad 'My Toledo' (voor vakken en communities). Hier verschijnen announcements normaal gezien slechts 7 dagen, ongeacht of de announcement permanent of niet-permanent is. Men kan via het pop-over-icoontje deze duur verkorten of verlengen. 2) in de 'My Courses' module onder de naam van het [...]

[Meer Info](#)

Regelgeving van Export Course Data

Via 'Export Course Data' (onder de uitdruk 'Course Tools' in het Control Panel) kan men kiezen voor een export van de groepen en groepslidaten (Export groups) of een export van alle gebruikers van de cursus. Tevens wordt ook extra informatie over deze gebruikers gegeven, nl.: Voor de groepslid: groepsnaam, user-id, cursusnaam, voornaam, familienaam, beschikbaarheid (available/unavailable), database, [...]

[Meer Info](#)

Uit 'Lijst alle users' problemen gefix bij vakken waarin één van de gebruikers gedeactiveerd was, werd deze vervangen door de optie 'Export Course Data'.

[Meer Info](#)

Regelgeving van de wachtwoorden bij het inloggen

Wanneer de login foutloos tijdens het inloggen lukt en een aantal foutboodschappen verschijnen, die niets aan indicatie geven van het mogelijke probleem: "Unable to retrieve user record from the database", de



My Toledo

Admin

Help

System Admin

[COURSES](#) > [F0FF1A | INFORMATIEKUNDE](#) > CONTROL PANEL

A-F0FF1A-0506: | F0FF1a | Informatiekunde - Leen Van Rentergem (Instructor)

Content Areas

[Course Information](#)

[Course Documents](#)

[Assignments](#)

[External Links](#)

[Books](#)

Course Tools

[Announcements](#)

[Course Calendar](#)

[Staff Information](#)

[Tasks](#)

[Discussion Board](#)

[Collaboration](#)

[Glossary Manager](#)

[Batch Enroll Users](#)

[Send Email - Toledo](#)

[Mail Control](#)

[Course Statistics - Toledo](#)

[Export Course Data](#)

[Advanced Groups Manager](#)

Course Options

[Manage Course Menu](#)

[Course Design](#)

[Manage Tools](#)

[Settings](#)

[Recycle Course](#)

[Course Copy](#)

[Import Package](#)

[Export Course](#)

[Archive Course](#)

User Management

[List / Modify Users](#)

[Enroll User](#)

[Remove Users from Course](#)

[Manage Groups](#)

Assessment

[Test Manager](#)

[Survey Manager](#)

[Pool Manager](#)

[Course Statistics](#)

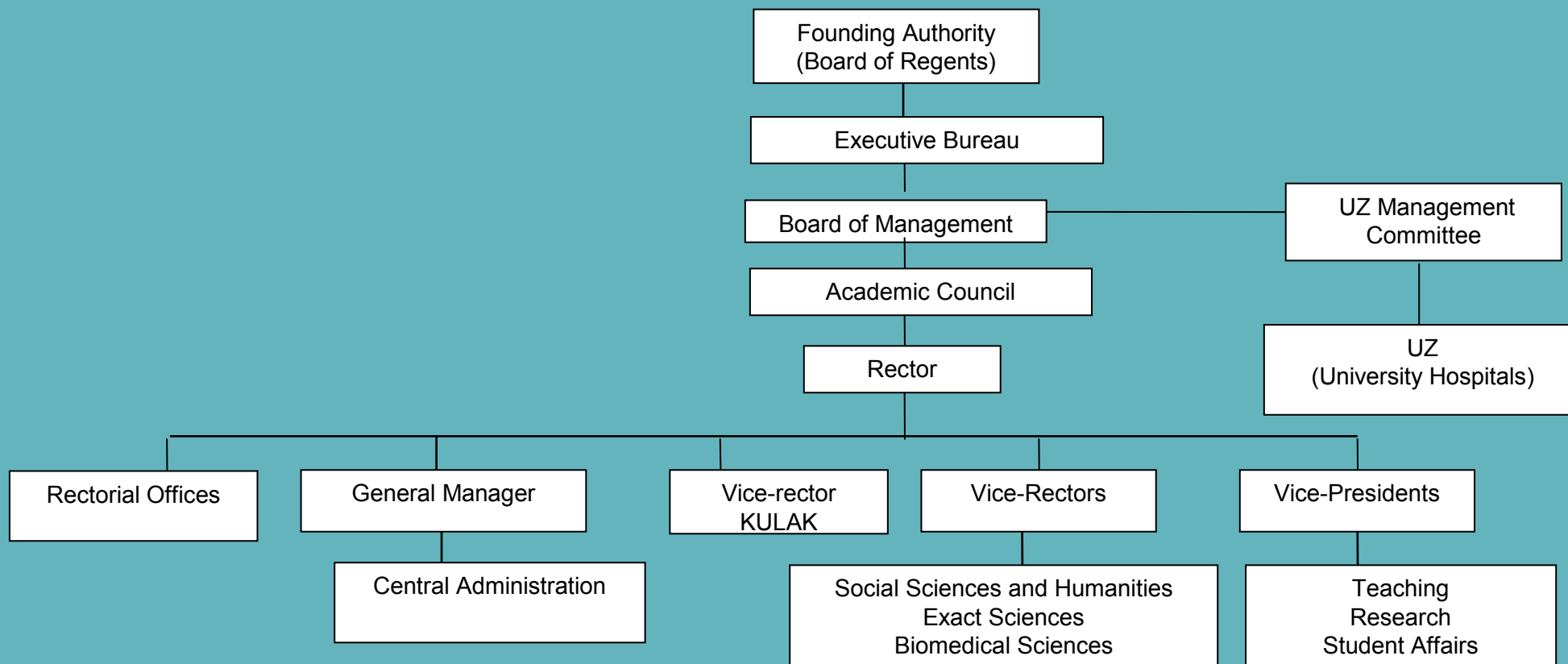
[Gradebook](#)

[Gradebook Views](#)

[Performance Dashboard](#)



Organigram K.U.Leuven



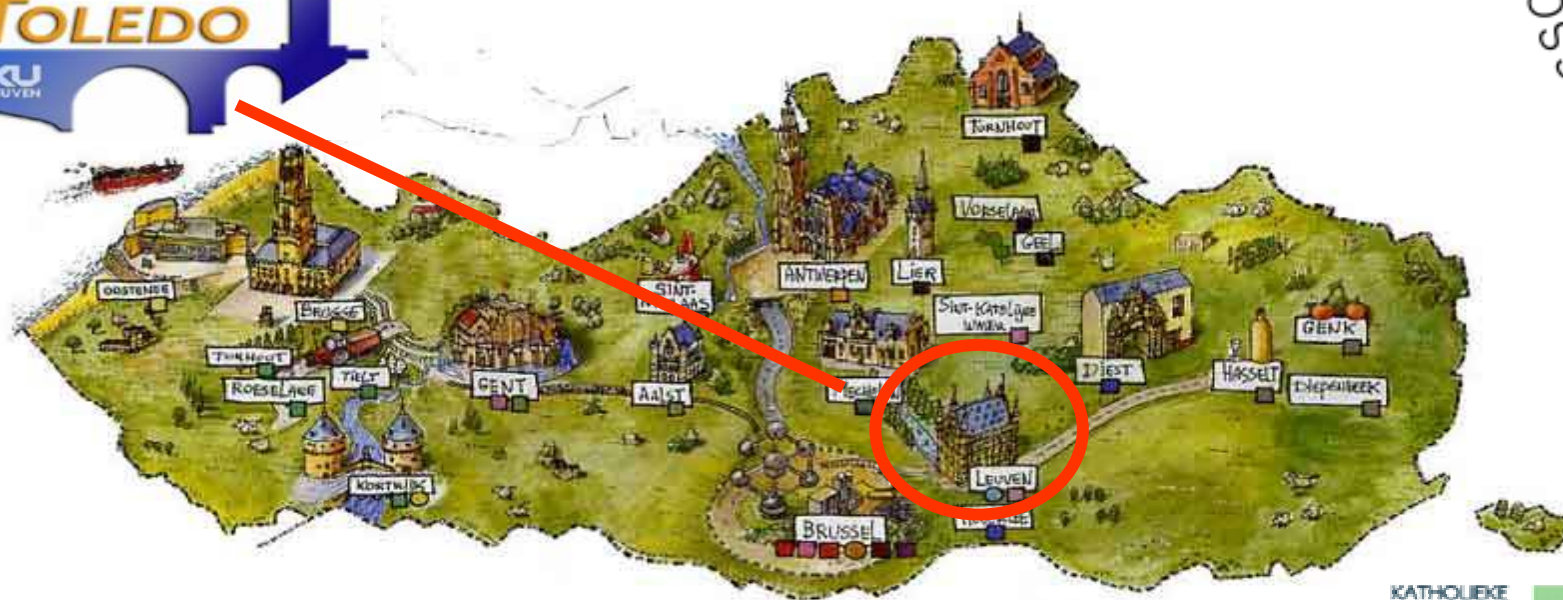


Organisational choices: mixed management groups

- ICTS board
 - ICT management
- ICTO advisory board
 - Education Management
 - General management
 - Teaching staff and experts
- TOLEDO
 - DUO/ICTO educational support service
 - LUDIT ICT support
 - Teaching staff
 - Educational support staff
- GDLO
 - Institutions management
 - Toledo representatives
- Internationalisation
 - Think Tank



ASSOCIATIE
K.U.-LEUVEN



Katholieke
HOGESCHOOL
Mechelen

KHLEUVEN
KATHOLIEKE HOGESCHOOL LEUVEN

KATHOLIEKE UNIVERSITEIT
LEUVEN

KATHOLIEKE
HOGESCHOOL
KEMPEN



GROEP T
HOGESCHOOL LEUVEN

KATHO
Katholieke Hogeschool Zuid-West-Vlaanderen

HOGESCHOOL VOOR WETENSCHAP & KUNST



KHBO
Katholieke Hogeschool Brugge-Oostende



Katholieke Hogeschool Limburg

Lessius
HOGESCHOOL



KATHO
SINT-LIEUVEN HOGESCHOOL

EQIBELT Workshop Dubrovnik 04/03/06



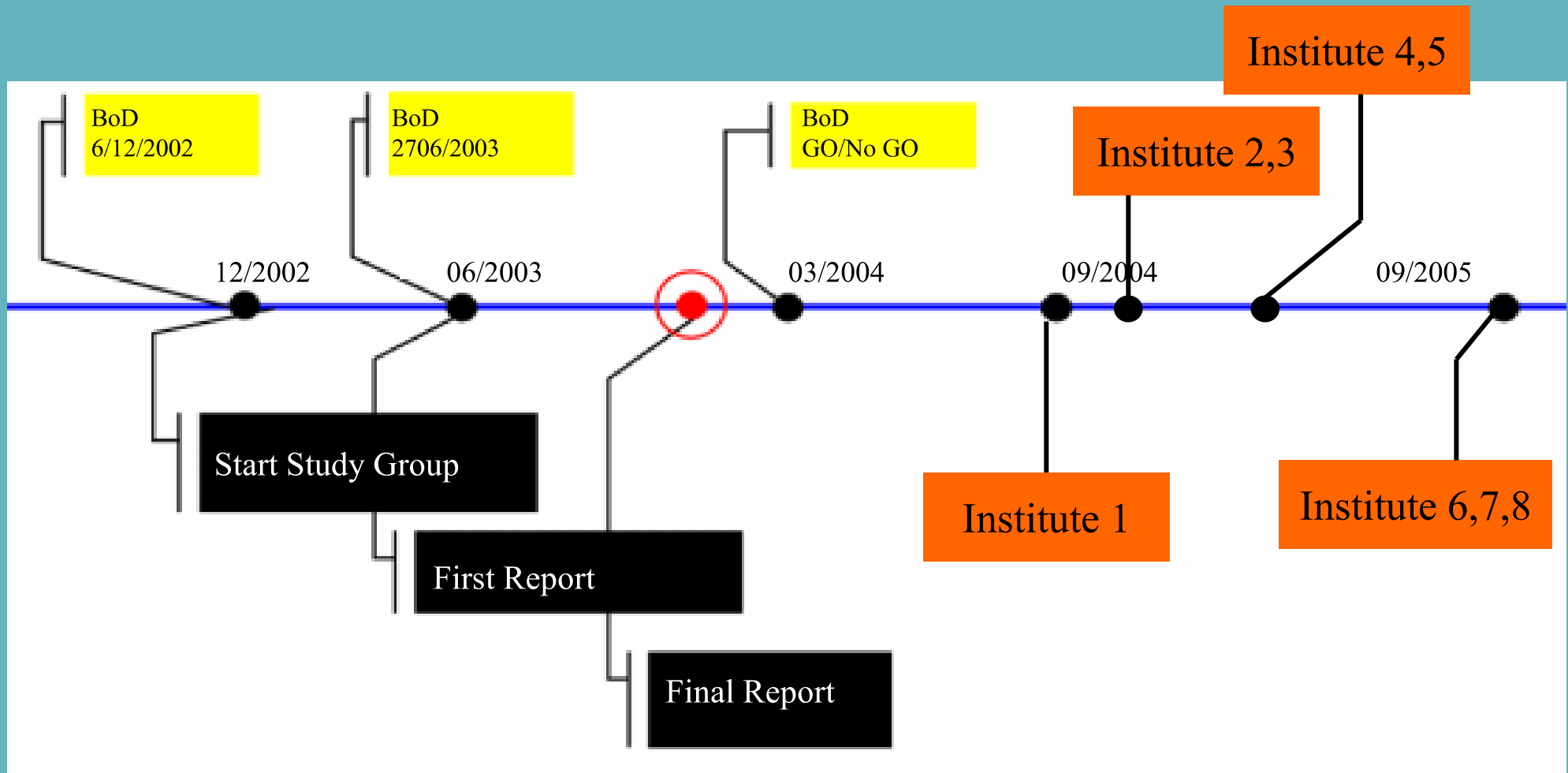
Association K.U. Leuven

- 70.050 students, in 23 Flemish cities
- 49.336 in institutes for Higher Education
- 20.714 in the university





Common Digital Learning Platform





Challenges

- Support, Association politics,...
- Administration:
 - Coupling Toledo with 12 different administration systems
 - Over the institutes non unique course id's
 - Over the institutes non unique userid's
- Organization:
 - Users must only see courses and users of their institution by default
 - Users want to see institutional information in the Community System
 - Users are student/staff/administrator in their institution



Challenges (cont.)

- In support for education
 - Different institutes want to offer bridges to other e-learning systems, e.g. QMP, FirstClass,...
 - Different educational needs (e.g. competence bases education versus guided independent learning)
- In system management
 - Different Academic agenda, when do we have time to upgrades?
 - 70000 students, 20000 courses, millions of enrolments



Branding



[Home](#) [Help](#) [Logout](#)

My Toledo

Admin

System Admin

Help



[Home](#) [Help](#) [Logout](#)

My Toledo

Lessius

Admin

Help



[Home](#) [Help](#) [Logout](#)

My Toledo

KH Kempen

Admin

Help

HOGESCHOOL VOOR WETENSCHAP & KUNST

[Home](#) [Help](#) [Logout](#)

My Toledo

W&K

Admin




Help

EQIBELT Workshop Dubrovnik 04/03/06



Tab pages

HOGESCHOOL VOOR WETENSCHAP & KUNST

  
Home Help Logout

My Toledo W&K Admin Help

W&K

Module Admin

W&K - Image



W&K - Info

W&K – departementen die instappen in TOLEDO

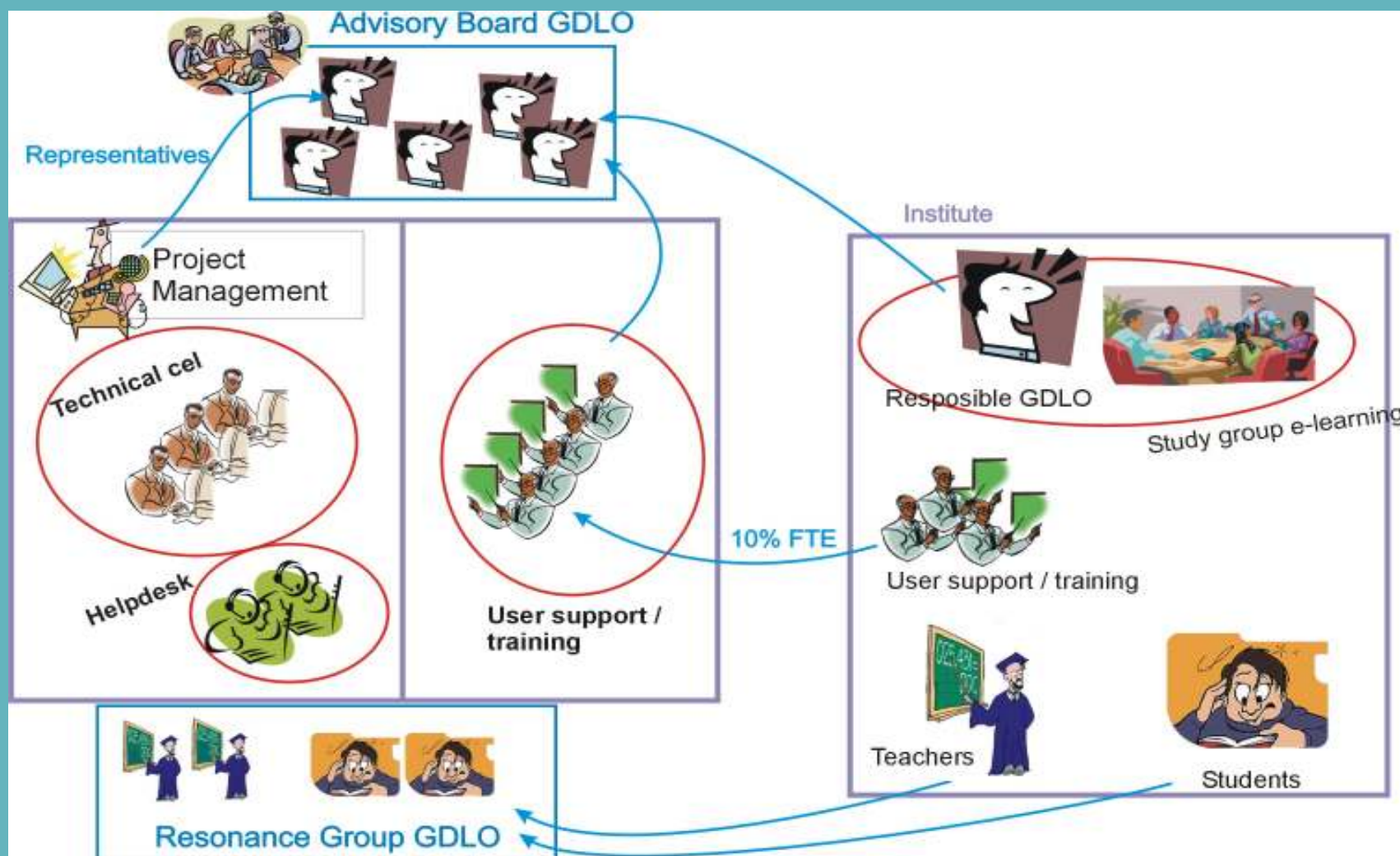
- Departement Architectuur – campus Sint-Lucas Architectuur Brussel-Gent [Website](#)
- Departement Beeldende Kunst – campus Sint-Lucas Beeldende Kunst [Website](#)
- Departement Handelswetenschappen – campus VLEKHO [Website](#)
- Departement Toegepaste Taalkunde – campus VLEKHO [Website](#)

W&K – info

Hogeschool voor Wetenschap & Kunst - Koningsstraat 328 – 1030 Brussel



GDLO support organization





Local administrators

- Quick enroll with restricted admin rights
- Toledo2know
- Special queue in helpdesk
- Communities
- Meetings
- Requests for change

Administratieve Module

- ▶ [Quick Unenroll](#)
- ▶ [Quick Enroll \(Search by user\)](#)
- ▶ [Quick Enroll \(Search by course\)](#)

- ▶ [Helpdesk IM](#)

- ▶ [Webformulier problemen/vragen](#)
- ▶ [Toledo2know](#)



Toledo *NG*

- From docent centered to learner centered
- From Bb centered to network centered
- From 'association' to 'international'

- First steps to *NG*
 - Consolidation of hardware and software
 - Content module
 - Social software
 - Building block to library system



Contact

- More information?
- Link: <http://www.avnet.kuleuven.be/en/>
- Mail: info@avnet.kuleuven.be
- Call: +32-16-32.82.00
- Fax: +32-16-32.82.70
- Visit: Kapeldreef 62, 3001 Heverlee (Belgium)